

Surface Mount Frequency Mixer

ADE-1LH+

Level 10 (LO Power +10 dBm) 0.5 to 500 MHz



CASE STYLE: CD636

+RoHS Compliant

The +Suffix identifies RoHS Compliance. See our web site for RoHS Compliance methodologies and qualifications



Available Tape and Reel at no extra cost

Reel Size	Devices/Reel
7"	20, 50, 100, 200, 500
13"	500, 1000

Maximum Ratings

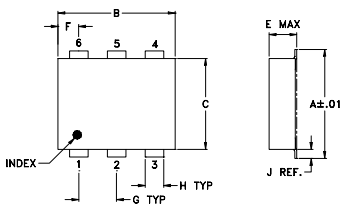
Operating Temperature	-40°C to 85°C
Storage Temperature	-55°C to 100°C
RF Power	50mW
IF Current	40mA

Permanent damage may occur if any of these limits are exceeded.

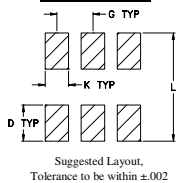
Pin Connections

LO	6
RF	3
IF	2
GROUND	1,4,5

Outline Drawing



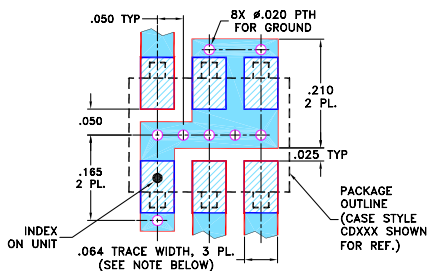
PCB Land Pattern



Outline Dimensions (inch/mm)

A	B	C	D	E	F	G
.272	.310	.220	.100	.162	.055	.100
6.91	7.87	5.59	2.54	4.11	1.40	2.54
H	J	K	L		wt	
.030	.026	.065	.300		grams	
0.76	0.66	1.65	7.62		0.25	

Demo Board MCL P/N: TB-03 Suggested PCB Layout (PL-052)



Features

- low conversion loss, 5.0 dB typ.
- excellent L-R isolation, 55 dB typ. and L-I isolation, 45 dB typ.
- good IP3, 15 dBm typ.
- aqueous washable
- protected by US Patent 6,133,525

Applications

- VHF/UHF receivers

Electrical Specifications

FREQUENCY (MHz)	CONVERSION LOSS (dB)	LO-RF ISOLATION (dB)			LO-IF ISOLATION (dB)			IP3 at center band (dBm)						
		L	M	U	L	M	U							
0.5-500	DC-500	65	50	55	35	47	26	52	40	45	22	34	20	15

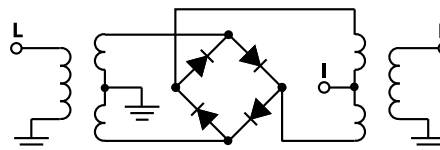
1 dB COMP.: +5 dBm typ.

L = low range [f_1 to $10 f_1$]
M = mid band [$2f_1$ to $f_1/2$]
U = upper range [$f_1/2$ to f_1]

Typical Performance Data

Frequency (MHz)		Conversion Loss (dB)	Isolation L-R (dB)	Isolation L-I (dB)	VSWR RF Port (:1)	VSWR LO Port (:1)
RF	LO	LO +10dBm	LO +10dBm	LO +10dBm	LO +10dBm	LO +10dBm
0.50	30.50	5.87	67.00	52.50	1.54	2.56
0.80	30.80	5.68	66.83	52.17	1.37	2.56
1.00	31.00	5.70	67.01	52.00	1.33	2.61
5.00	35.00	5.21	65.67	50.33	1.23	2.61
10.00	40.00	5.08	64.17	50.17	1.22	2.67
50.00	80.00	5.30	59.16	43.84	1.15	2.56
71.52	101.52	5.27	57.66	42.17	1.13	2.61
100.00	130.00	5.31	56.51	40.51	1.12	2.62
142.94	172.94	5.47	55.83	38.33	1.16	2.67
150.00	180.00	5.48	55.34	38.00	1.16	2.61
200.00	230.00	5.49	52.67	37.50	1.14	2.73
214.36	244.36	5.48	52.01	37.34	1.13	2.73
250.00	280.00	5.54	51.34	36.67	1.08	2.56
285.79	315.79	5.76	46.84	34.51	1.09	2.67
300.00	330.00	5.85	45.83	33.67	1.09	2.67
350.00	380.00	5.67	48.00	30.67	1.14	2.56
400.00	430.00	5.74	47.01	27.33	1.16	2.86
428.63	458.63	6.00	46.66	27.00	1.12	2.80
470.00	500.00	6.30	48.34	27.67	1.06	3.01
500.00	530.00	6.61	44.33	27.33	1.10	2.93

Electrical Schematic



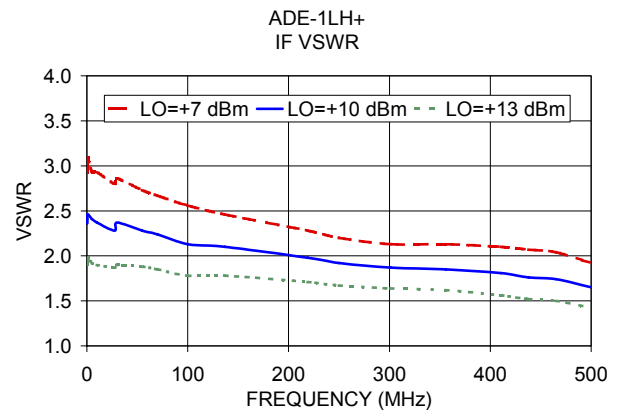
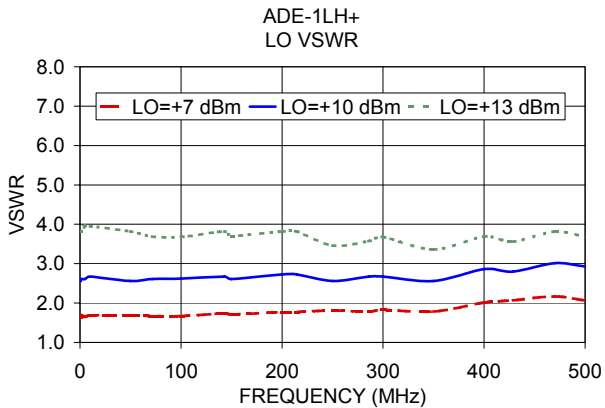
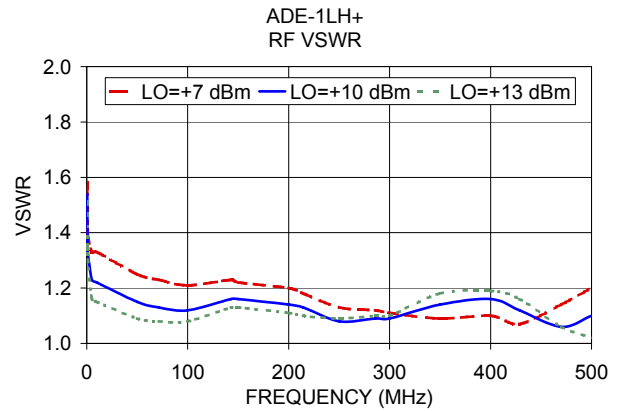
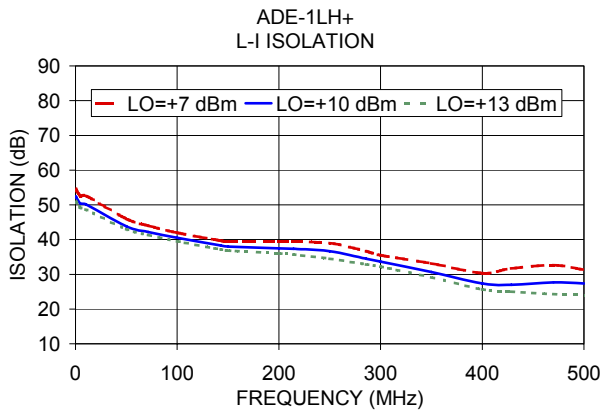
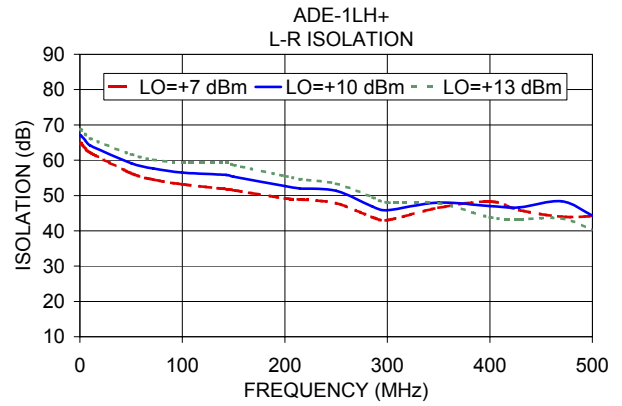
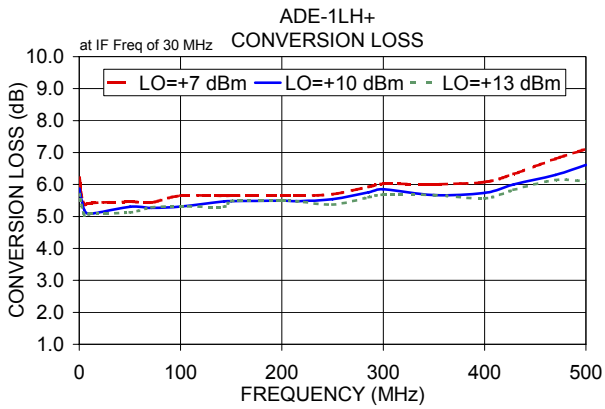
Notes

- A. Performance and quality attributes and conditions not expressly stated in this specification document are intended to be excluded and do not form a part of this specification document.
B. Electrical specifications and performance data contained in this specification document are based on Mini-Circuit's applicable established test performance criteria and measurement instructions.
C. The parts covered by this specification document are subject to Mini-Circuits standard limited warranty and terms and conditions (collectively, "Standard Terms"); Purchasers of this part are entitled to the rights and benefits contained therein. For a full statement of the Standard Terms and the exclusive rights and remedies thereunder, please visit Mini-Circuits' website at www.minicircuits.com/MCLStore/terms.jsp

Mini-Circuits

www.minicircuits.com P.O. Box 350166, Brooklyn, NY 11235-0003 (718) 934-4500 sales@minicircuits.com

REV. E
M158496
ADE-1LH
ED-7693/1
WL/TD/CP/AM
161021
Page 1 of 2



Notes

- A. Performance and quality attributes and conditions not expressly stated in this specification document are intended to be excluded and do not form a part of this specification document.
- B. Electrical specifications and performance data contained in this specification document are based on Mini-Circuit's applicable established test performance criteria and measurement instructions.
- C. The parts covered by this specification document are subject to Mini-Circuits standard limited warranty and terms and conditions (collectively, "Standard Terms"); Purchasers of this part are entitled to the rights and benefits contained therein. For a full statement of the Standard Terms and the exclusive rights and remedies thereunder, please visit Mini-Circuits' website at www.minicircuits.com/MCLStore/terms.jsp

